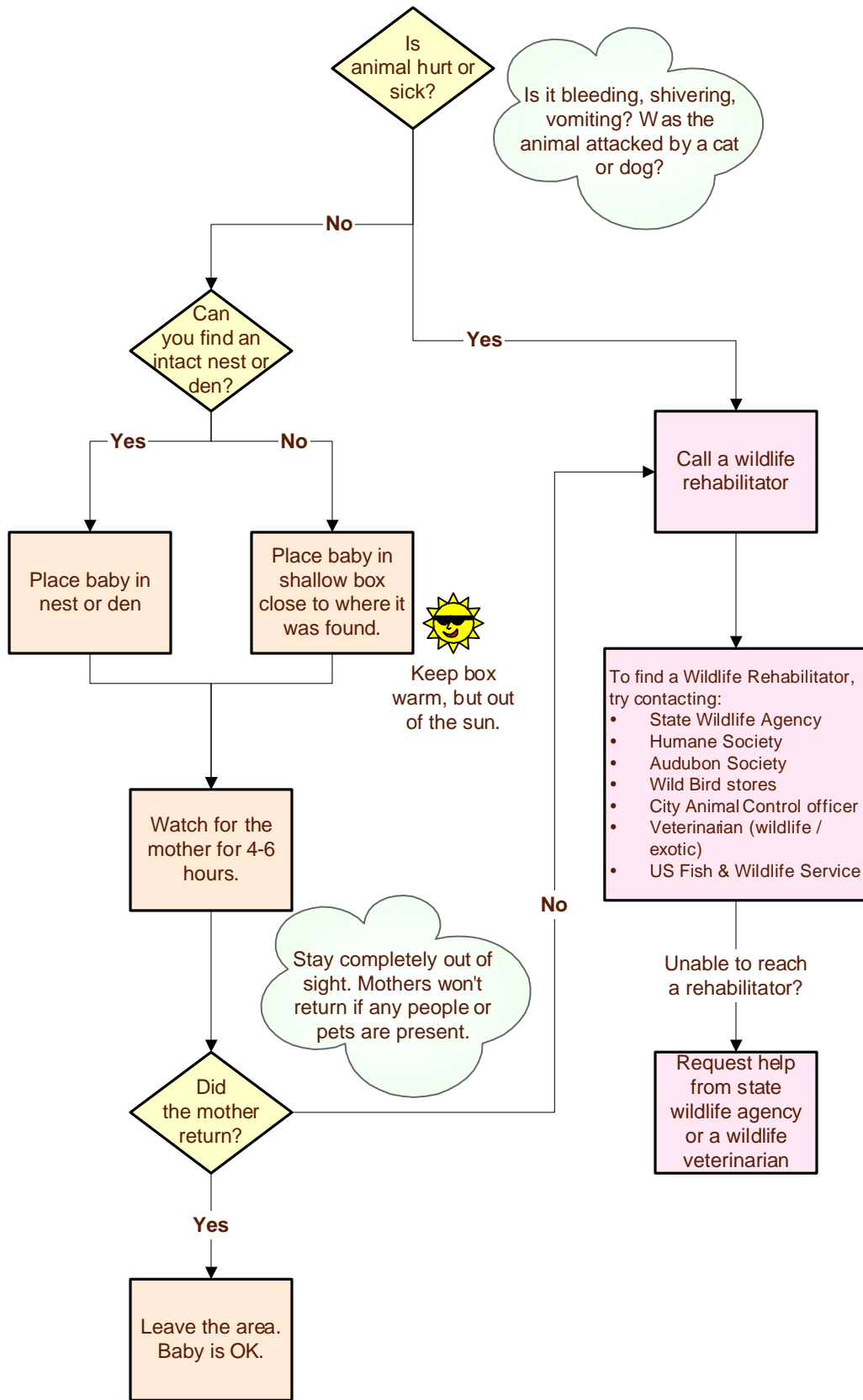


# I FOUND A BABY MAMMAL ~ NOW WHAT?



**A baby's best chance for survival is its mother.**



**If you find a fawn:**

- Mothers normally leave their babies to feed.
- If the baby looks cold, hungry, diseased or confused (or if dogs, other animals or people threaten its safety) call a wildlife rehabilitator or park ranger.
- Otherwise - leave the baby alone and leave the area. The mother will not return if people or pets are present.



**If you find baby bunnies:**

- If their nest has been damaged, it can be repaired. Look for a shallow depression lined with grass/fur. Place babies in nest with light layers of grass to hide them. Leave the area or the mother won't return. Mothers return only at dawn and dusk.
- If you find healthy bunnies that are 4-5 inches long, able to hop, with eyes open and ears up, they do not need help. They are able to survive on their own. Leave them alone. Questions? Call a wildlife rehabilitator.

